

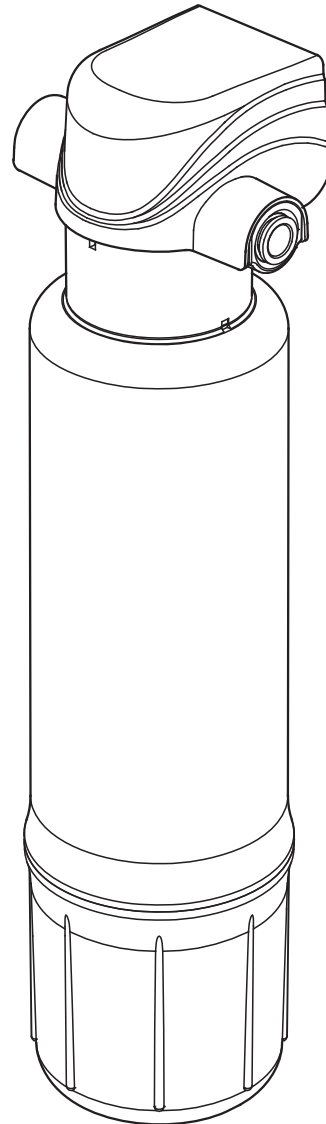
ECOWATER
S Y S T E M S®



Your Water. Perfected.

EAFF-100

EcoWater Advanced Faucet Filtration System



- ◆ Safety Guides
 - ◆ Installation
 - ◆ Operation
 - ◆ Maintenance
 - ◆ Repair Parts

System tested and certified by NSF International against NSF/ANSI Standards 42, 53 and 401 for the reduction of claims specified on the performance data sheet at www.nsf.org
System tested and certified to CSA B483.1 and NSF/ANSI/CAN 372.



Designed, Engineered &
Assembled in the U.S.A.

EcoWater Systems LLC
P.O. Box 64420, St. Paul, MN 55164-0420
www.ecowater.com

7392945 (Rev. C 4/16/24)

Installation and Operation Manual

TABLE OF CONTENTS

	Page
Before You Start	3
Specifications & Dimensions	3
Parts & Tools	4
Typical Undersink Installation	4
Installation Instructions	4-5
Step A - Make Tubing Connections	5
Step B - Install Filter Cartridge	5
Step C - Turn On Water, Check for Leaks and Rinse Carbon Fines	5
Filter Cartridges	6
Filter Cartridge Life	6
Filter Cartridge Replacement	6
Troubleshooting the System	7
Exploded View & Parts List	7
Performance Data	8

5 YEAR LIMITED WARRANTY

EcoWater Systems Advanced Faucet Filtration System Model EAFF-100 (not including filter cartridges)

Warrantor: EcoWater Systems LLC, P.O. Box 64420, St. Paul, MN 55164-0420

www.ecowater.com

Warrantor guarantees, to the original purchaser when the product is purchased from an authorized dealer, and when installed and maintained in accordance with the instructions, that the Advanced Faucet Filtration System (EAFF-100) will be free from defects in materials and workmanship and will perform in accordance with its written specifications for a period of five (5) years from the date the product is delivered.

If, within the first five years, a part proves, after inspection, to be defective, Warrantor will, at its sole option, either replace or repair the part without charge except normal shipping, installation and service charges. If a repair or replacement part is unavailable, Warrantor may refund the original purchase price. Labor to maintain the equipment is not part of the warranty. Filter cartridges, which are expendable, are not covered by the warranty.

General Provisions

The above warranties are effective provided the Advanced Faucet Filtration System is operated at water pressures not exceeding 100 psi (7.0 kg/cm²), and at water temperatures not exceeding 100°F (38°C); provided further that the Advanced Faucet Filtration System is not subject to abuse, misuse, alteration, neglect, freezing, accident or negligence; and provided further that the Advanced Faucet Filtration System is not damaged as the result of any force of nature such as, but not limited to, flood, hurricane, tornado or earthquake.

The limited warranty does not cover damage due to: (a) transportation, (b) storage, (c) improper use, (d) failure to follow the product instructions or to perform any preventive maintenance, (e) modifications, (f) unauthorized repair, (g) normal wear and tear, or (h) external causes such as accidents, abuse, or other actions or events beyond Warrantor's reasonable control. Use of aftermarket, used, or non-manufacturer provided parts will void all warranties. Warranty does not cover failures due to improper product installation. Warrantor is excused if failure to perform its warranty obligations is the result of strikes, government regulation, materials shortages, or other circumstances beyond its control.

THERE ARE NO WARRANTIES ON THE ADVANCED FAUCET FILTRATION SYSTEM BEYOND THOSE SPECIFICALLY DESCRIBED ABOVE. ALL IMPLIED WARRANTIES, INCLUDING ANY IMPLIED WARRANTY OF MERCHANTABILITY OR OF FITNESS FOR A PARTICULAR PURPOSE, ARE DISCLAIMED TO THE EXTENT THEY MIGHT EXTEND BEYOND THE ABOVE PERIODS. THE SOLE OBLIGATION OF WARRANTOR UNDER THESE WARRANTIES IS TO REPLACE OR REPAIR THE COMPONENT OR PART WHICH PROVES TO BE DEFECTIVE WITHIN THE SPECIFIED TIME PERIOD, AND WARRANTOR IS NOT LIABLE FOR CONSEQUENTIAL OR INCIDENTAL DAMAGES. NO DEALER, AGENT, REPRESENTATIVE, OR OTHER PERSON IS AUTHORIZED TO EXTEND OR EXPAND THE WARRANTIES EXPRESSLY DESCRIBED ABOVE.

Some states do not allow the exclusion or limitation of incidental or consequential damages, so the above limitation or exclusion may not apply to you. This warranty gives you specific legal rights, and you may have other rights which vary from state to state. This warranty applies to consumer-owned installations only.

Before You Start

- ▼ **Read all steps and guides carefully before installing and using your advanced faucet filtration system.** Follow all steps exactly to correctly install. Reading this manual will also help you to get all the benefits from the filtration system.
- ▼ **Do not use with water that is microbiologically unsafe or of unknown quality without adequate disinfection before or after the system.** This system is certified for cyst reduction and may be used on disinfected waters that may contain filterable cysts.
- ▼ **All plumbing should be done in accordance with local codes and requirements.** In Massachusetts, plumbing code 248 CMR 3.00 and 10.00 shall be adhered to. Consult with your licensed plumber.
- ▼ **The EAFF-100 advanced faucet filtration system works on water pressures of 40 psi (minimum) to 100 psi (maximum).** If your house water pressure is over the maximum, install a pressure reducing valve in the water supply pipe to the filtration system.
- ▼ **Do not install the filtration system outside, or in extreme hot or cold temperatures.** Temperature of the water supply to the filtration system must be between 40°F and 100°F. Do not install on hot water.

Specifications & Dimensions

Supply Water Pressure Min. - Max.	40 - 100 psi (276 - 689 kPa)
Supply Water Temperature Min. - Max.	40 - 100 °F (4 - 38 °C)
Rated Service Flow	1.8 gallons per minute (6.8 liters per minute)
Inlet - Outlet	3/8" quick connect fittings (tubing not included)

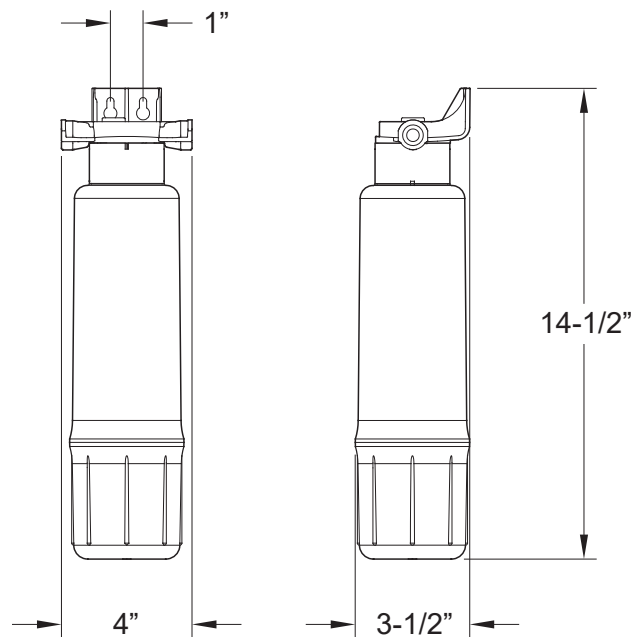


FIG. 1

Questions? Call Toll Free 1-800-86 WATER

Parts & Tools

Included:

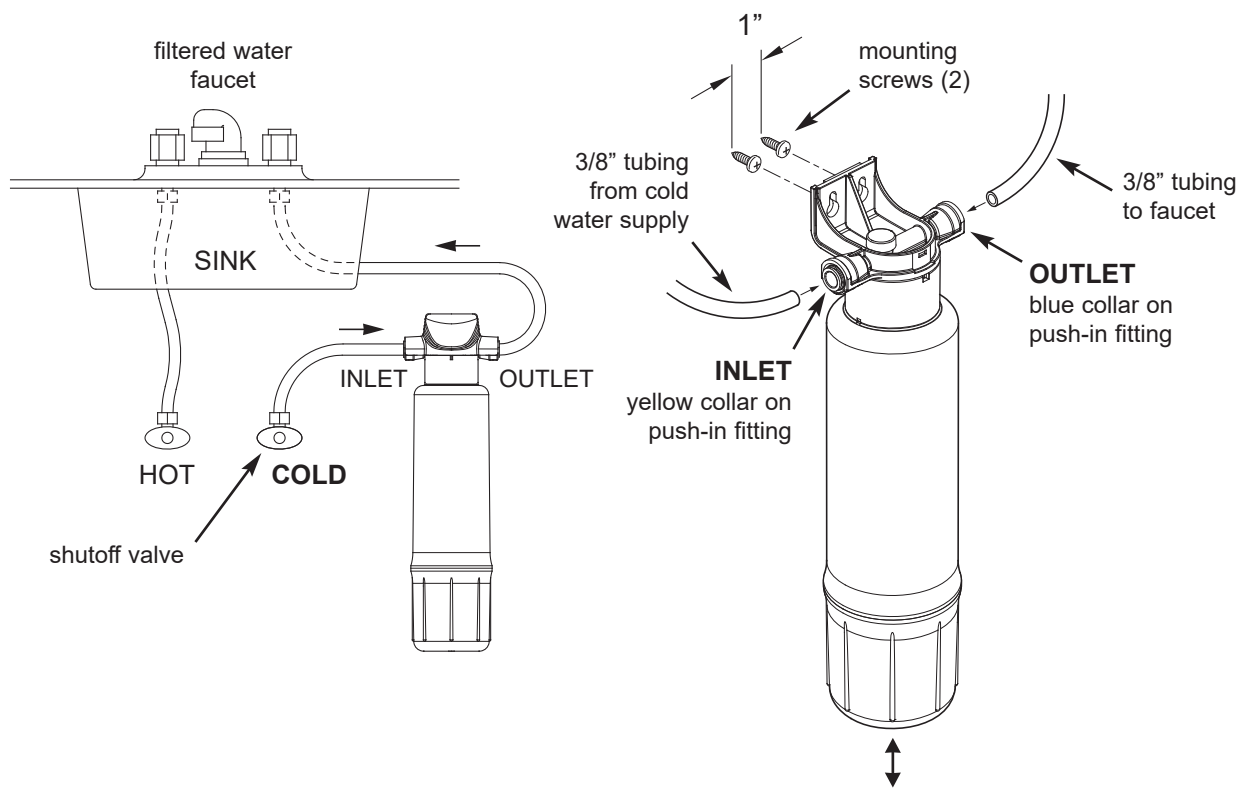
- Filter head, bracket & mounting screws
- Top cover
- Filter cartridge

Not Included:

- Slotted and Phillips screwdrivers
- Pliers and adjustable jaw wrench
- Tubing cutter

Installation Instructions

Check and **comply with local plumbing codes** as you plan, then install the advanced faucet filter into the sink's cold water supply line, under the kitchen and/or bathroom sink, to filter the cold water.



NOTE: Be sure to allow a minimum space of 1-1/2" under the system for removing the filter cartridge to change it.

FIG. 2

Step A - Make Tubing Connections

1. **Close the sink's water shut off valve(s)**, or another shut off valve upstream from where you will install the filter, **and open faucets** to relieve pressure from the sink's cold water supply line.
2. Locate the line connecting the cold water shutoff to the sink faucet. Adapt this line to 3/8" O.D. tubing (not included).
3. Cut tubing ends square and insert tubing all the way into the filter system inlet and outlet. Pull on the tubing to be sure that it's held firmly in the fittings.

Tubing Connection (all push-in fitting locations):

This system includes push-in fittings for quick tubing connections. When working with the fittings, do the following.

continued on the next page

Installation Instructions

continued from the previous page

Connect Tubing:

1. Use a tube cutter to cut the end of tubing square.
2. Inspect the end (about 1") of the tubing to be sure there are no nicks, scratches or other rough spots. If needed cut the tubing again.
3. Push tubing through the collet and all the way into fitting. Full engagement is 3/4" length of tube into the fitting.

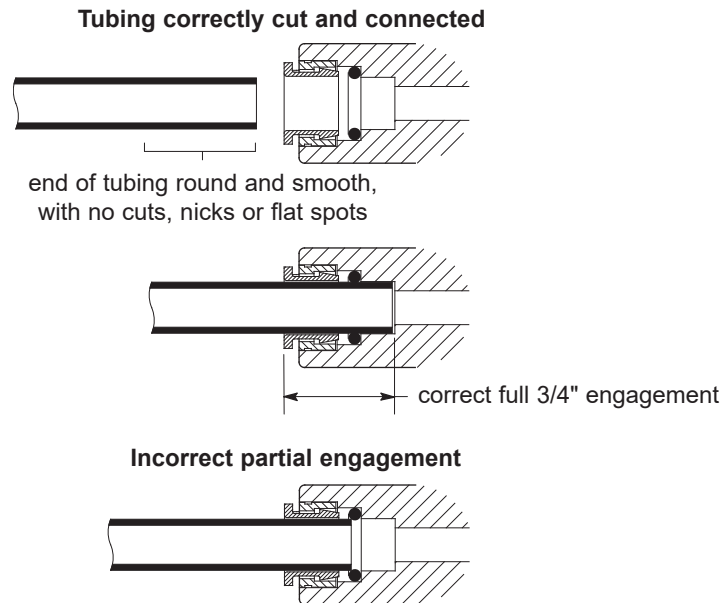


FIG. 3

To Disconnect Tubing:

1. Push the collet inward and hold with a finger while pulling the tubing out.

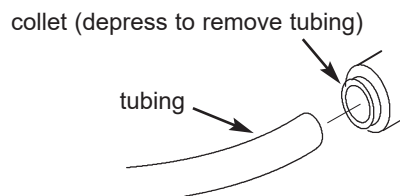


FIG. 4

Step B - Install the Filter Cartridge

1. Remove the small plastic shipping cap from the open end of the filter cartridge.
2. Install the cartridge onto the water filter head assembly, as shown in Figure 5. Turn cartridge to the right to tighten.

Step C - Turn On Water, Check for Leaks and Rinse Carbon Fines

1. Open the shutoff valve(s) that you closed at the beginning of this installation.
2. Open the filtered water faucet to purge air from the system. When the water runs smooth, with no bubbles or spurting, close faucet and check installation for leaks.
3. Open the filtered water faucet and let water run for 20 minutes to rinse out carbon fines.

Filter Cartridges

Filter Cartridge Life

Filter Cartridges: A filter cartridge contains activated carbon. When new, open the filtered water faucet and allow fine, carbon particles to purge from the cartridge. Flush for 20 minutes. It is recommended to **replace filter cartridge every six months** of use. There are several variables that determine how long a cartridge will last. These include:

1. How much water you use, and
2. How much sediment, taste and/or odor, or other unwanted substance, is in the water.

Use the following information as a guide. However, no matter which type of cartridge you are using, you will know it is time to replace them when you first notice the return of the unwanted sediment, taste and/or odor in your water, or when the flow diminishes or stops.

EcoWater EAFF-100 Advanced Faucet Filtration System with 7391745 Advanced Faucet Replacement Filter element conforms to NSF/ANSI 42, 53 and 401 for the specific performance claims as verified and substantiated by test data. The rated capacity for this system is 2000 gallons (7570 liters) at a rated service flow of 1.8 gallons per minute (6.8 liters per minute).

Filter Cartridge Replacement

NOTE: There is no need to shut off the water supply when replacing the filter cartridge.

1. Turn filter cartridge to the left to remove cartridge from the filter head.
2. Dispose of the cartridge in a proper manner.
3. Install new cartridge. Turn cartridge to the right to re-attach to the filter head.

Filter Cartridges: Filter cartridges contain activated carbon, a black powder. When new, open the filtered water faucet and allow fine, carbon particles to purge from the cartridge. Flush for 20 minutes.

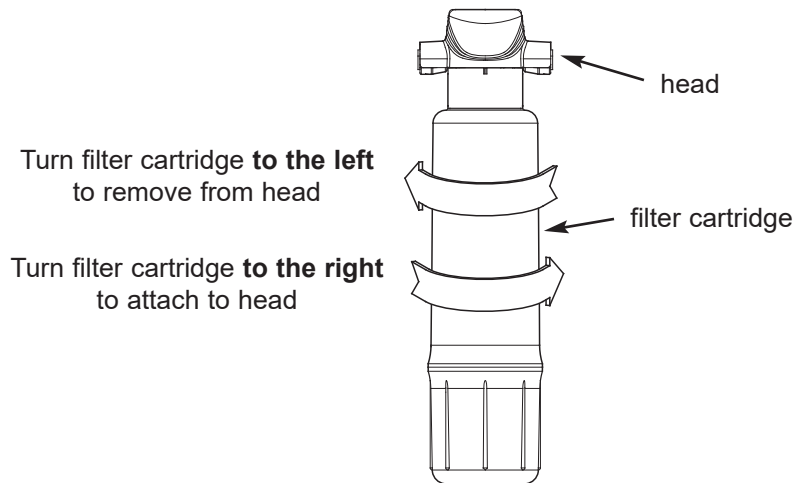
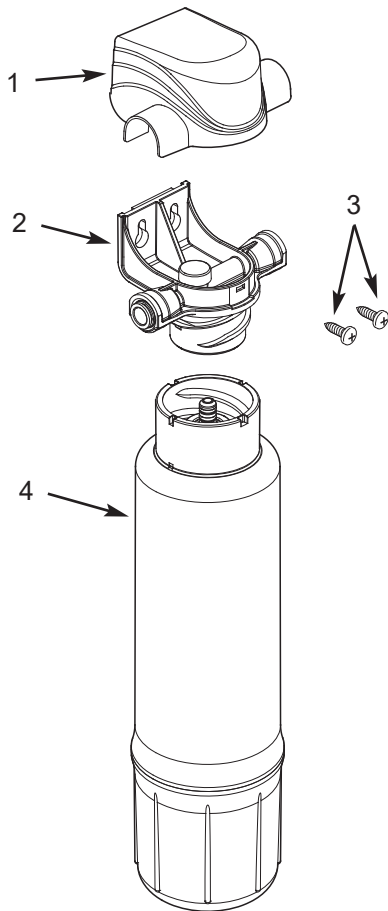


FIG. 5

Troubleshooting the System

Problem: Taste and/or Odor.	
Cause: Filter cartridge exhausted.	Correction: Replace filter cartridge.
Cause: System contaminated.	Correction: Sanitize system. Call 1-800-86 WATER for instructions.
Problem: Water leaks at push connect fittings.	
Cause: Tubing not pushed in all the way.	Correction: Push tubing in all the way into fittings.
Cause: Tubing not cut square.	Correction: Cut tubing square.
Cause: Tubing nicked.	Correction: Remove nicked portion, reinsert tubing into fitting.
Cause: Outer tubing surface not smooth.	Correction: Remove rough portion, reinsert tubing into fitting.



Parts List

Key No.	Part No.	Description
1	1073-25-01	Cover
2	1042-45-HA	Head Assembly with Quick Connect Fittings
3	1073-26-AB	Mounting Screw (2 req.)
4	7391745	Repl. Filter Cartridge, Advanced Faucet

For repair parts call your local EcoWater dealer or go to www.ecowater.com to locate a dealer in your area.

Manufactured and warranted by
 EcoWater Systems LLC
 P.O. Box 64420, St. Paul, MN 55164-0420
www.ecowater.com

Performance Data

EAFF-100 EcoWater Advanced Faucet Filtration System

IMPORTANT NOTICE: Read this performance data and compare the capabilities of this unit with your actual water treatment needs. It is recommended that, before purchasing a water treatment unit, you have your water supply tested to determine your actual water treatment needs. This filter system is designed to be used for the reduction of the performance claims listed below. Do not use where water is microbiologically unsafe or of unknown quality, without adequate disinfection before or after the system. Systems certified for cyst reduction may be used on disinfected water that may contain filterable cysts. While testing was performed under standard laboratory conditions, actual performance of this system may vary based on local water conditions. Some or all of the contaminants reduced by this unit may not be in your water supply. See elsewhere in this owner's manual for further instructions on filter cartridge replacement, system installation, operating procedures, and warranty. The maintenance instructions must be followed for the product to perform as indicated below.

PERFORMANCE CLAIMS						
Contaminant	Required Influent Level (µg/L) ^②	NSF Max. Permissible Effl. Level (µg/L) ^②	Average Influent Level (µg/L) ^②	Avg. / Max. Effluent Level (µg/L) ^②	Avg. / Min. Percent Removal	EPA ^① Max. Contaminant Level (µg/L) ^②
Lead @ pH 6.5	150 ±10%	10	150	<0.5 / <0.5	>99.7 / >99.7	15
Lead @ pH 8.5	150 ±10%	10	140	<0.5 / <0.5	>99.7 / >99.6	15
Mercury @ pH 6.5	6 ±10%	2	5.7	<0.2 / <0.2	>99.5 / >96.5	2
Mercury @ pH 8.5	6 ±10%	2	5.9	0.3 / 0.6	95.0 / 89.8	2
Benzene	15 ±10%	5	15	<0.5 / <0.5	>96.7 / >96.7	5
Cysts	≥50,000 #/mL ^⑤	99.95% ^③	92,500 #/mL ^⑤	<1 #mL/1 #/mL ^⑤	99.99 / 99.99	None ^④
Substance						
Chlorine Taste & Odor	2000 ±10%	50% ^③	1900	50 / 50	97.4 / 97.4	None ^④
Particulate, Class I (0.5 to <1 micron)	110,000 particles / mL ^⑤	85% ^③	19,700,000 particles / mL ^⑤	318,300/580,000 particles / mL ^⑤	98.49 / 99.6	None ^④
Microplastics (0.5 to <1 micron)	110,000 particles / mL ^⑤	85% ^③	19,700,000 particles / mL ^⑤	318,300/580,000 particles / mL ^⑤	98.49 / 99.6	None ^④

① Environmental Protection Agency maximum contaminant level as required under the Safe Drinking Water Act.

② Micrograms per liter, which is equivalent to parts per billion (PPB).

③ NSF minimum percent reduction requirement. Acceptance level for this substance is based on percent reduction, rather than maximum effluent concentration.

④ The EPA has not determined a maximum contaminant level for this chemical.

⑤ Particulate Class I, microplastics and cysts reported in particles per milliliter.

General Information

This system has been tested according to NSF/ANSI 42, 53 and 401 for reduction of substances listed above. The concentration of the indicated substances in water entering the system was reduced to a concentration less than or equal to the permissible limit for water leaving the system, as specified in NSF/ANSI 42, 53 and 401. The testing was performed using spiked tap water at a flow rate of 1.8 gallons per minute (6.8 L/min.), pH of 7.5 ± 0.5, pressure of 60 psig, and temperature of 68 ± 5°F.

This product is protected by U.S. patent no's: 6,866,704; 6872.311; 7,276,166; 7,296,691; 7,241,388; 7,287,650; 7,566,014; 8,056,733; applicable U.S. patent applications; foreign patents and foreign patent applications.

Installation Requirements

Pressure Range40-100 psig (276-689 kPa)
 Temperature Range.....40-100°F (5-38°C)
 Service Flow Rate.....1.8 GPM (6.8 LPM)
 Service Life.....2000 gallons (7570 Liters)

Maintenance

Filter cartridges should be replaced every 2000 gallons or six months, whichever comes first. For replacement elements, contact your dealer or call 1-800-86 WATER.